



SYLVESTER THE CAT

Continuing from December Clues 1-27 are in only a suggested order. There are 4 additional visual clues (unassigned)

Thank you for coming along Happy Christmas!

With December this is the last of the £500 prize 2008 series. See grid for further details.

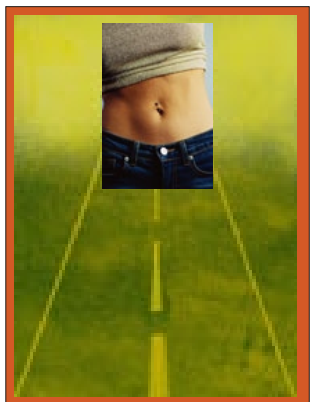
You can purchase a superb (printed) 'Calendar Puzzles 2009' with clues set by the top UK compilers in 3D. £10 from the sale of each calendar will go to BBC Children in Need Appeal. Remaining net 'profits' will go to RNIB Enterprises Ltd to help build a new home and school for blind/visually impaired young people. The project balance will be zero. See Home Page.

December

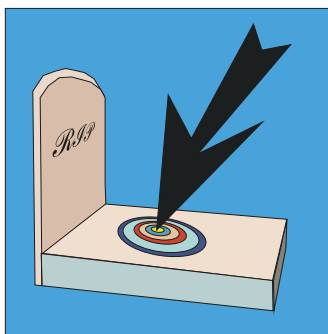
Sirius



BARGAIN BASEMENT



MIDDLE OF THE ROAD



CENTRE OF GRAVITY

Mon	Tues	Wed	Thurs	Fri	Sat	Sun
1 MIDDLE OF THE ROAD 22 d 311 d Average position of line	2 MAGIC 22 aw Wise men at beginning of century produce terrific, inexplicable phenomena (5)	3 DO RON 25 aw Donor broke down repeatedly when he walked her home, when her heart stood still. His name was Bill! (As Crystal reported) (2,3)	4 LASER 26 aw Ray began 'Light amplification by the stimulated emission of radiation'. Very coherent! (5)	5 OZ 27 aw Judy had her way with splendid jaundiced fellow in this fantasy land(2)	6 BO 28 aw Diddle's first to give short corporal bouquet (1,1)	7 TT 30 aw Culture on trial reveals race issue (1,1)
8 PG 31 aw Doctor returns to give certificate (1,1)	9 EXTRA 33 aw 3,11,1 aw Fielder beyond cover has little part to play (5)	10 OKAPI 34 aw Kind of giraffe to manage a constant endorsement (5)	11 DANNY 35 aw Oh Boy! For whom the pipes, the pipes are calling (5)	12 GARISH 23 d Extremely bright ventriloquist's Christian community? (6)	13 Z 29 (first letter of Nov 27) Flashy kind of car at one with Victor (1)	14 STRAIN 32 d Confused rat lives in sin to try hard to pass through muslin congregation (6)
15 CENTRE OF GRAVITY 24 d Newton's proposal to gain the heart of the masses (6,2,7)	16 BARGAIN BASEMENT 36 d Knocked down cellar? (7,8)	17 BANKS 36 aw Riverside deposits? (5)	18 REGAL 39 aw Knock back lager in royal style (5)	19 ASTLE 40 aw Baggy Jeff, fresh from Newcastle, lost top pace ending in Scotland. What a nutter! (5)	20 NOD AT 41 aw How a sleepy acquaintance might acknowledge another? (3,2)	21 'AMMER 42 aw 'Enry used one to nail man with feet of Clay ('5)
22 EPOCH 44 aw Period of extended play before burst of Scottish irritation (5)	23 ETHIC 45 aw The Spanish left Ethel in charge of moral principle (5)	24 TAROT 46 aw Card sharp embraces love and gives brief appreciation: 'Tommy's rubbish!' (5)	25 NEGATED 37 d Denied gun in desperation (7)	26 MOOCHER 43 d Loiterer goes after Minnie perhaps by Cab? (7)	27 SYLVESTER THE CAT 38 d Male (feline) with speech impediment withm bird with pie (9,3,3)	28
29 MIDDLE OF THE ROAD 	30 CENTRE OF GRAVITY 	31 SYLVESTER THE CAT 				BARGAIN BASEMENT

2008

